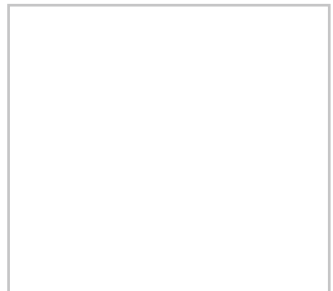
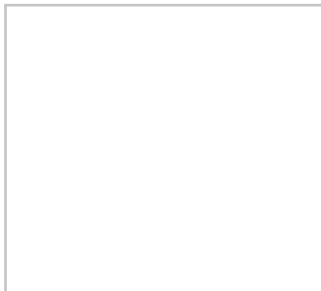
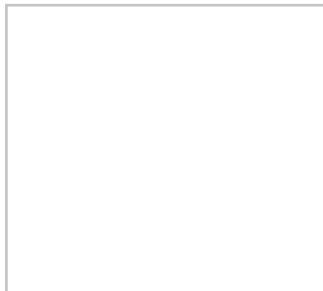



SERIES B 1145 F
HNA-coupling, DIN 89266



Protection class to EN 60 529:	IP 56
Voltage:	250 V AC
Current intensity:	16 A
Material:	Brass
Couplings interior:	2-pole + PE, version 2, up to 250V

Type	Description	 kg
B 1145 F	Standard HNA coupling made of brass. 2 poles+PE with protective earthing. 16A/250V. To be used together with B 1142 M Ø cable outside diameter 10~13mm	0,6

Accessories / Spare parts

Description	Suitable for
Coupling interior, 2-poles+PE, version 2 up to 250V, 16A, DIN 89320 Plastic screw cap with chain	Noack B 1145 series